

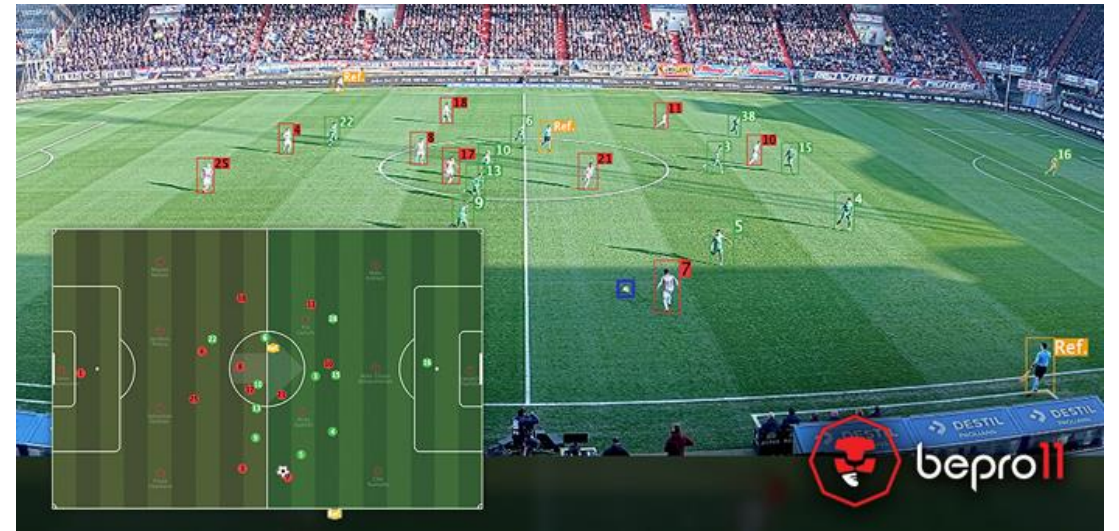
Working and Learning with AI: Promises and Challenges

Sangjoon Lee, PhD
Korea Labor Institute
June 2nd, 2023

Football in the Past: Cha Bum-Kun



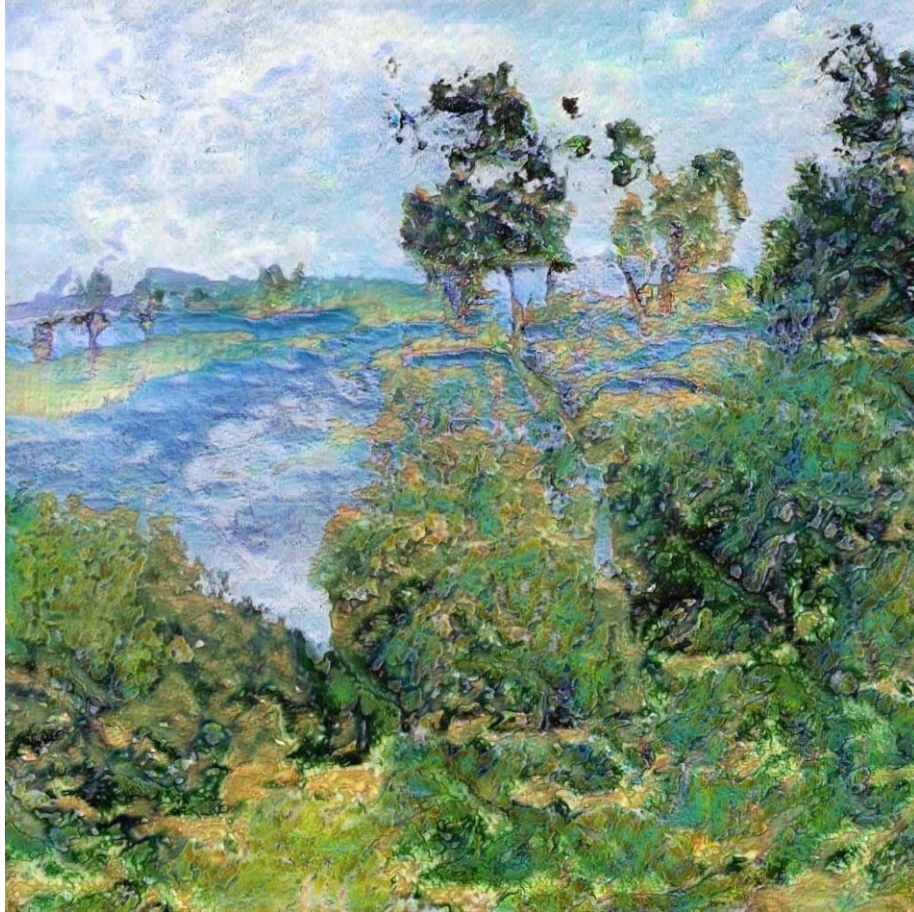
AI and Football



Painting in the Past: Ro Eun Nim

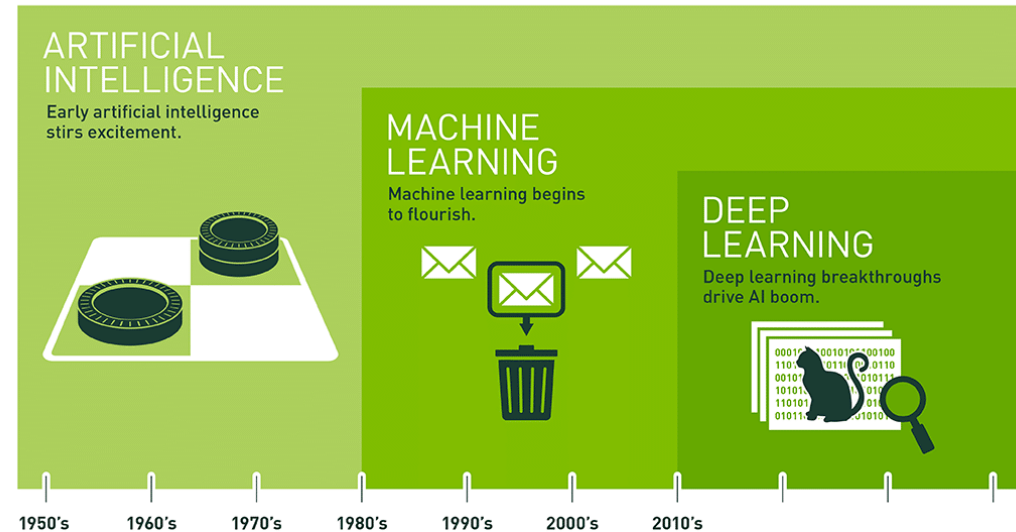


AI and Painting



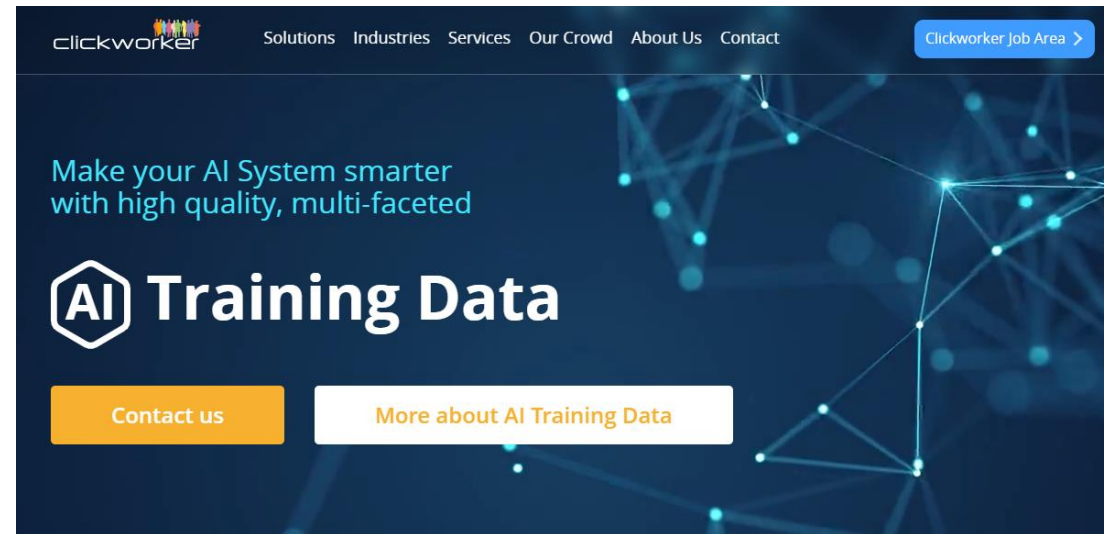
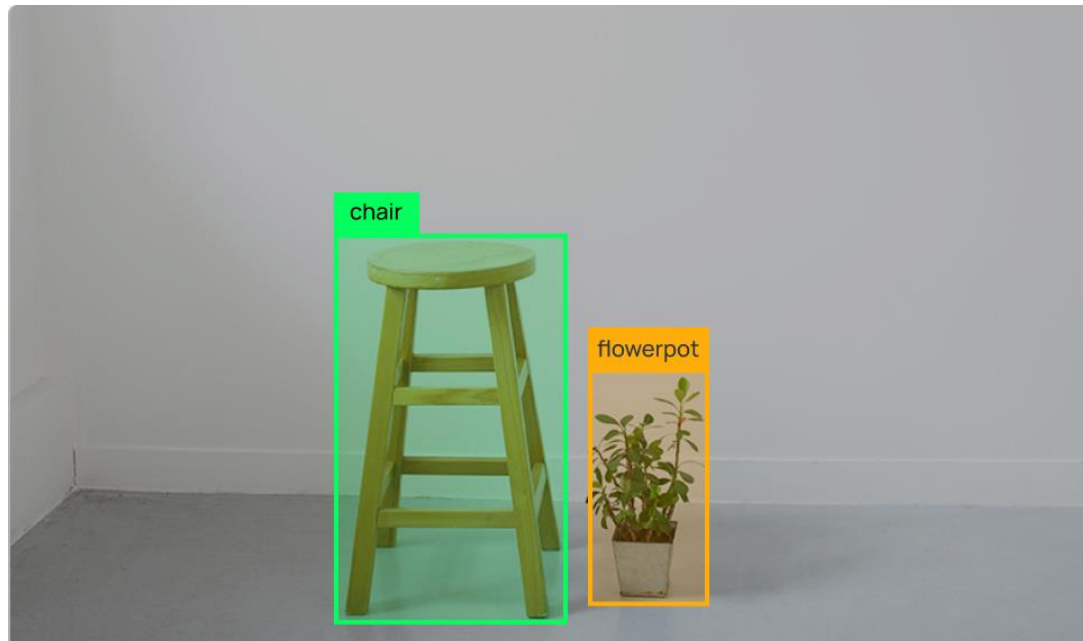
AI: Input, Model, Output

- Input
 - Data Collecting
 - Data Labeling
- Model
 - Deep Learning
 - Large Language Model(LLM)
- Output

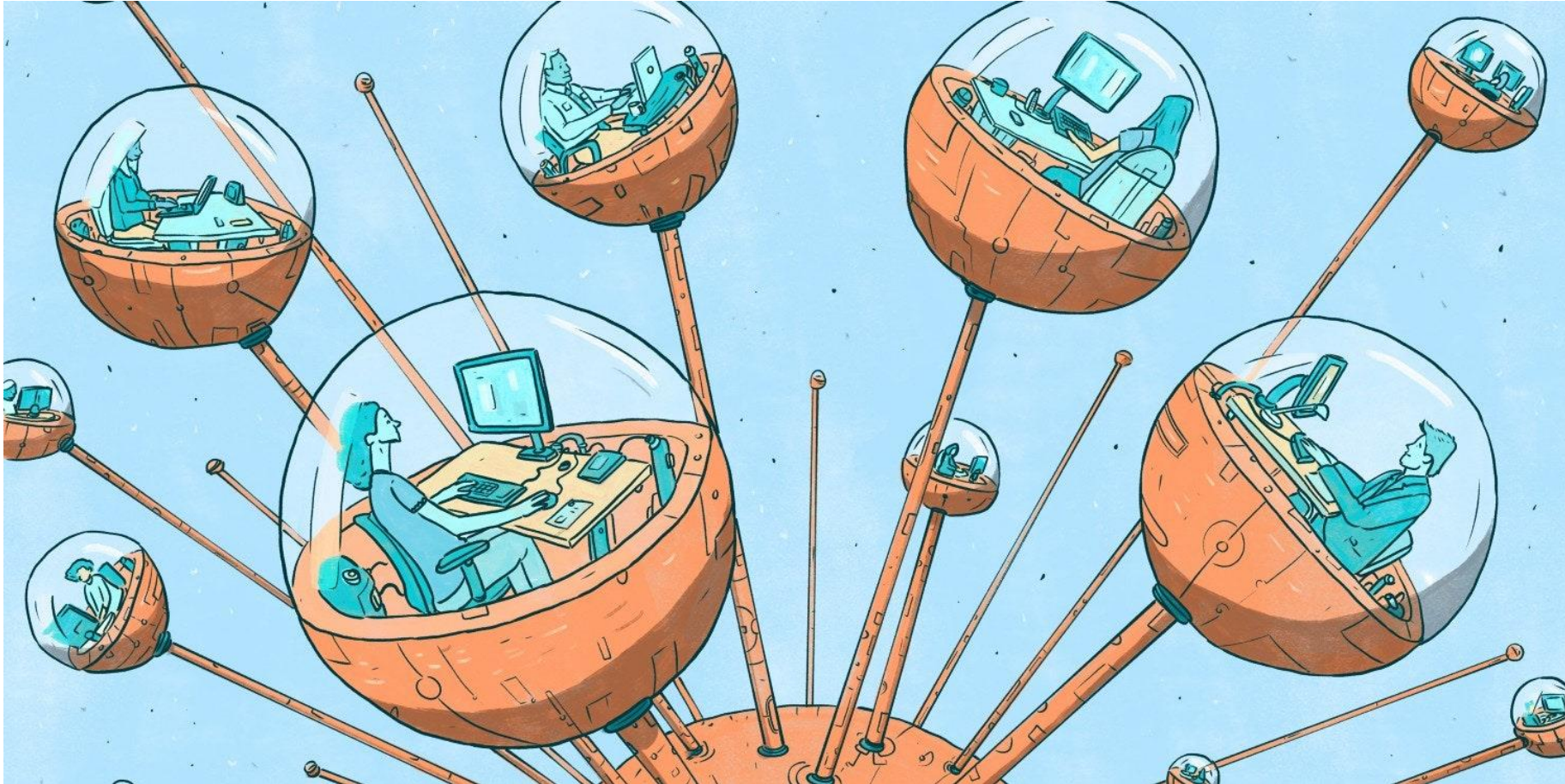


Since an early flush of optimism in the 1950s, smaller subsets of artificial intelligence – first machine learning, then deep learning, a subset of machine learning – have created ever larger disruptions.

Data Collecting and Labeling



Humans (Tediously) Working for AI



Research Agendas @ KLI

- (1) AI Impact on Labor Processes
- (2) AI Impact on Labor Market
- (3) AI Challenges and Social Responses



Research Agendas @ KLI

- AI Impact on Labor Processes
 - Industrial Sectors
 - Firms and Organizations
 - Jobs and Occupations
 - Roles and Tasks



Research Agendas @ KLI

- AI Impact on Labor Market
 - Education and Skill Formation
 - Teaching, Coaching, and Learning in the AI Era
 - Reskilling and Upskilling
 - Employment
 - Measuring and Predicting AI Impact on Employment
 - AI Replacing Human Labor
 - AI Targeting Industries, Jobs, and Occupations



Research Agendas @ KLI

- AI Challenges and Social Responses
 - From HCI(Human-Computer Interaction) to Human-Centered AI
 - Regulating AI as an Agency and Actor in Employment and Labor Relations
 - Regulating Algorithm and AI as a Platform Coordinator



Celebrating Our Friendship (with AI)



140 Years Together, 140 More
to Come

140 gemeinsame Jahre, 140
weitere werden folgen

그 동안 함께 한 140년, 앞으로
함께 할 140년

Q&A

